

2012



St. Oran's College

"Empowering young women to be the best that they can be"

Prospectus



YEAR 7-13

INTEGRATED COLLEGE

FOR GIRLS



Welcome to St. Oran's College



St. Oran's College is a Year 7-13 integrated college for girls. Established in 1958 by the Wellington Presbytery of the Presbyterian Church of New Zealand, the college opened in 1959.

During its relatively short life, the college has established a proud tradition and an enviable reputation as a school which promotes educational excellence, Christian values and high levels of achievement in all fields of endeavour.

Our students' performances in N.C.E.A. (National Certificate of Education Achievement) examinations have consistently ranked St. Oran's College among the top academic schools in the Greater Wellington area.

St. Oran's College strives to provide all students with a secure and supportive environment where they are encouraged to make the most of the opportunities available to them. It offers your daughter an opportunity to develop her true potential.

D Ackroyd
Principal



Mission Statement:


St. Oran's College is a Year 7-13 Presbyterian girls' college that educates its students by providing a wide range of opportunities that enable them to become responsible and valued members of society.

College Philosophy:

St. Oran's College provides a motivating environment, based on a strong foundation of Christian values that instils in each student a desire to succeed.

"Empowering young women to be the best that they can be"

ST. ORAN'S COLLEGE – CHARTER GOALS

<p style="text-align: center;">Goal 1</p> <p>Each student has developed the necessary confidence in her abilities to succeed.</p>	<p style="text-align: center;">Goal 2</p> <p>Each student will leave St. Oran's college with the appropriate qualifications to enable them to have choices for a successful future.</p>	
<p><i>"Nisi Dominus Frustra"</i></p> 		
<p style="text-align: center;">Goal 3</p> <p>Through the teaching and application of sound Christian values students will demonstrate:</p> <ul style="list-style-type: none"> • A willingness to offer service • Empathy with others • A sense of justice 	<p style="text-align: center;"><i>"Without the Lord in Vain"</i></p> <p style="text-align: center;">Goal 5</p> <p>An effective and productive governance base is in place.</p>	<p style="text-align: center;">Goal 4</p> <p>Each student will participate in a range of extra-curricular activities e.g:</p> <ul style="list-style-type: none"> • Sporting • Cultural • House events • Service • Duke of Edinburgh – Hillary Award



About our College

The name of our College

honours St. Oran, who, in AD563 travelled from Ireland with St. Columba to settle on the Island of Iona. Illness prevented St. Oran from accompanying Columba on his mission to bring Christianity to the Picts in Scotland, so he remained on Iona, offering prayers of intercession for the journey. St. Columba attributed his success in Scotland to St. Oran's prayers from Iona.

The heraldry for our crest

is as follows:

"A walled crown with a cross" - an institution with a spiritual purpose

"The ring of glory" - linked with Celtic Christianity

"The stars" - the Southern Hemisphere

St Andrew's cross - Scottish/Presbyterian tradition

Our College Motto

Nisi Dominus Frustra

"Without the Lord, in vain."

This quotation comes from the Bible: Psalm 127, verse 1.

"Except the Lord build the house, they labour in vain that build it:

Except the Lord keep the city, the watchman walketh in vain."

The College Houses

Columba -

Acknowledges this College's connection with the founding of the Scottish Christian tradition by St.Columba, from the Island of Iona.

Macfarlane –

Honours Rev. John Macfarlane who stepped ashore on Petone beach in 1850, beginning the first Presbyterian Church in New Zealand.

Rutherford –

Honours Dr A. M. Rutherford, the Founding Chairman of the College, whose foresight, enthusiasm and commitment were largely instrumental in the establishment of the College.

McRae –

Honours Mrs Daphne McRae, Principal of St. Oran's College from 1961 – 1968 and long serving Member of the Society of the Hutt Valley Presbyterian College for Girls Inc.



Certificates and Entrance to University

Leaving Certificate

Every student on finishing their schooling is entitled to a Leaving Certificate stating their age and year level attained on leaving. This Certificate is issued on request when students have returned books and completed the leaving procedure.

Leaver's Record of Achievement

Students can apply, upon finishing their schooling, for a Leaver's Profile from the Principal. The profile comprises written statements covering general work skills, specific subject skills and personal and social skills. It also lists awards and responsibilities and cultural sporting commitments.

National Certificate of Education Achievement

- Level 1 for Year 11: Need to attain 80 credits (including 10 Literacy and 10 Numeracy)
- Level 2 for Year 12: Need to attain 80 credits (minimum of 60 from Level 2 and 20 from any other level).
- Level 3 for Year 13: Need to attain 80 credits (minimum of 60 Level 3 credits plus 20 at Level 2 or above).
- Level 4 for Year 13 / Scholarship students.

Entrance to University

Need a minimum of 42 credits at Level 3 or above in approved subjects. Minimum requirements are:

Mathematics: 14 credits at Level 1 or higher.

English: 8 credits at Level 2 or higher of which 4 must be from reading and 4 from writing.

Other approved subjects 14 credits from each of three subject areas.

New University Entrance from 2014

University Entrance (UE) will continue to be the minimum requirement to go to a New Zealand University. From **2014**, to be awarded UE you will need:

- NCEA Level 3
- Three subjects – at **Level 3 or above**, make up of:
 - 14 credits each, in three approved subjects.
- Literacy – 10 credits at **Level 2 or above**, make up of:
 - 5 credits in reading
 - 5 credits in writing
- Numeracy – 10 credits at **Level 1 or above**, made up of:
 - Achievement standards – specified achievement standards available through a range of subjects,
 - Or
 - Unit standards – package of three numeracy unit standards (26623, 26626, 26627 – **all** three required).

Once you have met the requirements for University Entrance it will appear on your Record of Achievement.



St. Oran's College Curriculum

Essential Learning Areas	Year 7 & 8	Year 9	Year 10	Year 11	Year 12	Year 13
Students must take...	...all subjects marked in bold	...all courses marked in bold	...all courses marked in bold	...all courses marked in bold plus three full-year subjects All courses are assessed using Achievement Standards and or Unit Standards and contribute towards NCEA Level 1	...all courses marked in bold plus four full-year subjects All courses are assessed using Achievement Standards and or Unit Standards and contribute towards the NCEA Level 2	...five full-year subjects All courses are assessed using Achievement Standards and or Unit Standards and contribute towards the NCEA Level 3
English	English	English	English	English	English	English
Learning Languages	French Spanish Te Reo	French Spanish Te Reo	French Spanish Te Reo	French	French	French
Sciences	Science	Science	Science	Science	Biology Chemistry Physics	Biology Chemistry Physics
Mathematics & Statistics	Mathematics	Mathematics	Mathematics	Mathematics	Mathematics	Mathematics with Calculus Statistics and Modelling
Social Sciences	Social Studies	Social Studies	Social Studies Financial Literacy	Geography History Economics	Geography History Economics Business Studies	Geography History Economics Business Studies
The Arts	Art Performing Arts	Art Music	Art Music	Art (Visual) Drama Music	Art (Visual) Art-Design Photography Music	Painting Design Music History of Art
Technology	Technology – Food / Textiles	Technology – Food / Textiles	Technology – Food / Textiles Digital Technology	Technology –Materials Technology – Food / Hospitality Digital Technology	Technology - Materials Technology – Food / Hospitality Digital Technology	Technology – Fashion Design Digital Technology
Physical & Health Education	Physical Education / Health	Physical Education / Health	Physical Education / Health	Physical Education	Physical Education	Physical Education
Christian Studies	Christian Studies	Christian Studies	Christian Studies	Christian Studies	Christian Studies	Christian Studies
Other Courses	Literacy			STAR Courses – Tots' n'Toddlers	STAR Courses – First Aid	

This information is correct as at February 2012 but is subject to change depending on minimum class size requirements and the annual curriculum review. Please confirm course availability with St. Oran's College when you enrol your daughter.



Uniform

Summer Uniform:

Summer skirt/shorts

Cream blouse

Blazer

Black Roman sandals OR black lace-up shoes with above the ankle white socks

Winter Uniform:

Hunting Stewart Kilt (mid-calf length)

Hunting Stewart Tie

Regulation Lemon Blouse

Blazer

Dark Green Jersey

Black lace up shoes

Black opaque tights

Physical Education:

Forest green and red shorts

Red and Forest green top or House T-Shirt

Rugby Jersey (optional)

White ankle socks

Sports Shoes

Sports Uniform

Green netball skirt (only if playing netball or hockey etc.) Year 9 up.

Green and red netball tops

Green or black underwear (no boxers)

Tracksuit

Hair:

Hair ties or clips are to be plain, one colour: dark green, white, black, brown, tortoiseshell, or red.

Bags:

College Bag - black, - available from College Shop.

Purchase of Uniforms - All uniform items are supplied through the College Uniform Shop and may be purchased at:

Tuesday lunchtimes	12.15 – 2.15pm
Thursday	12.15 – 2.15 pm 3.15 pm to 4.15 pm
Extra hours as necessary during the year	

All items except shoes and white ankle socks are available from the College Uniform Shop.



Travelling to St. Oran's College

By Bus:

Upper Hutt

St. Oran's College has its own "special" bus service to and from Upper Hutt, by arrangement with NZ Bus. The bus travels up High Street, through Taita and onto Upper Hutt and Brown Owl via Stokes Valley. A Snapper card can be used on this service. Bus stops at the College gates.

Tawa, Whitby, Pauatahanui etc

An NZ Bus bus service that starts at Tawa and travels via Whitby and Pauatahanui is available. This is also a St. Oran's "special" and delivers students to the bus stop directly outside the gates.

Eastbourne

Students travelling from Eastbourne travel on the School Bus Service provided by Classic Coaches which delivers and picks up students from the St. Oran's College gate. Students may purchase bus passes from the driver. These arrangements may change in the future.

Other Minibus services may be negotiated where demand makes the service economic.

By Bicycle:

Students who cycle to St. Oran's are provided with bicycle stands at the rear of the College. All students are required to wear cycle helmets, to have their bicycles serviced regularly, and to strictly observe the Road Code.

Private Car:

Students wishing to bring their own motor vehicles to College must gain prior permission from the Deputy Principal. Cars may not be parked in the college grounds. Student drivers may not transport other pupils without written permission from the parents of those pupils, checked by the Deputy Principal.



Extra-Curricular Activities and Special Interests

St. Oran's College staff strive to recognise students' individual strengths and interests and seek to develop them.

Music

The St. Oran's College Music Department offers music for all year levels, from junior to senior. Both the module junior and elective senior classes provide opportunities for exploring creative ideas in composition, performance and musical appreciation. The music programme explores many different genres and gives students a solid grounding in this discipline.

We have a strong itinerant programme which enables students at St. Oran's to learn music on-site. Our itinerant tutors include some of the most talented and high profile performance musicians in the Wellington region. Participation in school music groups is high. We currently have a School Choir, Wind Band, String Group and Rock Band. Singing Assemblies occur every week giving the entire school an opportunity to create music on a regular basis.

Sport

On the sports field enthusiastic staff, senior students and parents put in many hours of coaching and managing time for inter-school competitions or for leisure time activities. We offer a wide variety of sports including the following:

Winter: Badminton, Basketball, Hockey, Netball, Soccer, Volleyball
Summer: Cricket, Tennis, Touch, School Athletics and Swimming

School Productions

A senior production is enjoyed by seniors every second year. In the alternate year a junior production may happen, staffing permitting.

Young New Zealanders Duke of Edinburgh Hillary Award

St. Oran's College is an independent operating authority for the Award, and many students are working towards the awards. Each year several students reach Gold Award level. Continuation of this scheme is dependent on staffing.

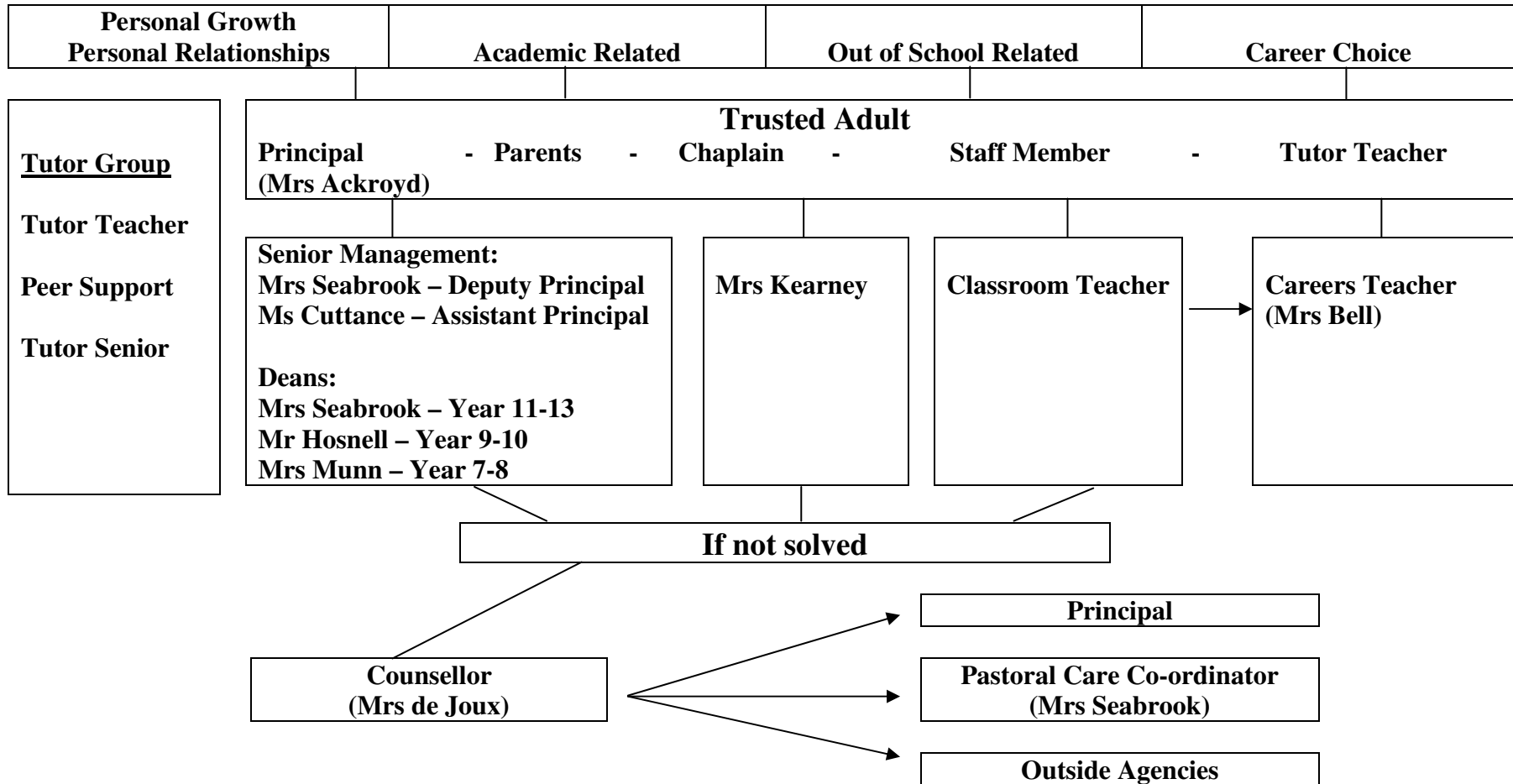
Many other activities such as Debating, Kapa haka, and a Christian Group complete the varied programme, and the sharing of talent and interest ensures that formal education is well supplemented.

Students are encouraged to take part in activities outside the classroom and to develop their interests and talents. This is an essential part of developing into a well-rounded person.



Pastoral Care Network

A Student with a Need
(including a health issue)





Special Programmes

Education Outside The Classroom

Year 7 students undertake a 3-day camp which involves a variety of activities which help students get to know each other and to develop trust, co-operation and communication skills as well as Outdoor Education skills. Outdoor education opportunities are also provided for Years 8, 9, 10 and 12.

Year 7/13 Peer Support

This programme provides a small group setting where Year 7 students meet with trained senior students.

Year 10 Careers

Students take part in a career related activity called “The Real Game”. This programme assists with later subject choices, builds confidence and encourages realistic expectations of the world of work.

Learning Support

Learning Support is available for individual students or groups of students for specific areas identified. Learning Support is available to students at all levels.

Gifted and Talented

St. Oran’s College runs a Gifted and Talented Programme catering for individuals or groups of students.

Careers Education

All students have access to the Careers Advisor and careers information.

Business Mentoring Programme

This programme aims to match Year 13 students with members of the local business community. The purpose of mentoring will depend on the student’s particular goals, but may include experience in a particular career area.

Our Careers Adviser is able to give careers counselling, supply information, assist with curriculum vitae development and interview skills. A Career Information Database is available for student use in the Library and the Careers Room houses pamphlets and handbooks. Liaison visits from tertiary education institutions and other career areas take place at several times during the year.



General Information

House System

Pupils of the College are divided into four Houses for the purpose of competition. Various inter-house trophies are contested each year, and these generate friendly rivalry and House Spirit. Athletics Sports Day, Swimming Sports, House Drama, Music and Writing are all House competitions.

Student Leadership

A Head Girl, Head of College Council, Head of Special Character, Cultural Captain, a Sports Captain plus four House Captains are appointed each year by the students and staff. These nine girls form the Senior Executive. All Year 13 students are involved in College leadership and their position in the College is indicated by the St. Oran's Senior Badge. Year 12 students are encouraged to participate in all leadership activities to enable them to prepare for the responsibility of Year 13 level. Senior students meet regularly with the Principal and other senior staff to discuss the organisation of student activities.

St. Oran's College Student Council

Elected students from each vertical tutor group meet regularly with the Head of College Council and Deputy Principal to discuss issues raised at their Tutor meetings.

Reporting to Parents

Reports are sent out regularly. At the end of Term One there is an interim progress report for all students. Full reports are given in June and December. Special evenings are arranged during the year when parents can consult all their daughter's teachers.

Interim Reports:	Issued in March/April, followed by Parent Interviews, giving early indication of attitude, behaviour and progress.
Mid-Year Reports:	Full reports are issued. Parent interviews are held before the end of Term II for seniors and the beginning of Term III for juniors.
End of Year Reports:	Full reports issued to all students indicating progress and achievement for the whole year.



General Information

Homework

The development of effective study habits is an important aspect of academic life at St. Oran's College. For this reason, homework is set in most subjects each night from Year 7 upwards. At least one hour of homework per night is expected of each Year 7 student and each student has a homework timetable. This requirement will increase one half hour for each increasing year level. Parents are requested to inform the Principal if any student consistently spends time in excess of that set in her timetable.

Newsletters

These are posted to all parents, giving details of College life. They can also be found on our website www.storans.school.nz.

Canteen

The Canteen is open every day. A range of food is offered, with the emphasis on health. The Canteen has been the recipient of three Heart Beat Awards.

Our Code of Behaviour

- Treat other people as you would wish to be treated.
- Strive for excellence: extend yourself and work hard.
- Make the most of every opportunity and involve yourself in co-curricular activities.
- Respect other viewpoints.
- Help automatically when others need help.
- Always speak pleasantly. There is never a reason for inappropriate language and/or rudeness to others.
- Pick up your own rubbish/clean up your own mess.
- Treat other people's property with the respect it deserves. This includes school property.
- Be Punctual: to school, to class or to any co-curricular commitment you have made. It is polite to inform your teacher beforehand if you need to be absent.



St. Oran's College Fees/ Donations Effective from: 1 January 2012 (subject to change)

Basic fee/donation per term including GST: \$988.02 Annually \$3,952.08

Hutt Valley Presbyterian College for Girls' Inc. (HVPC for Girls' Inc) = Board of Proprietor's

Board of Proprietors (HVPC for Girls Inc)				Other			Total Term Fees/Donations per Student
Attendance Dues (GST inc.)	Special Character Donation*	Building Donation*	Total per Term	Board of Trustees ICT Donation* (per term/ per student)	Parents' Association Donation* (per term / per family)	Fees Protection Insurance (per term / per student)	
431.37	421.55	50.00	902.92	50.00	20.00	15.10	988.02

*** A number of the payments detailed in this schedule are classified as donations and as such a tax credit (being a third of the donations paid) refund can be claimed from the IRD. To allow parents to claim this tax credit, a letter is sent out annually detailing the donations paid.**

The donations (that will be itemised on the term accounts) include:

- Special Character Donation – this allows the Board to operate the school in accordance with the goals and objectives of St. Oran's College, including its Special Character. This is required for the provision of Chaplain's expenses, Christian Education resources, wider educational, recreational and cultural opportunities and to provide the class sizes that parents seek to be a feature of the school, which Government funding does not provide for.
- Building Donation – this provides the funding for ongoing building and facility improvements required by St. Oran's College.
- ICT Donation – this assists the Board to provide ICT equipment, services and facilities, which the Government funding does not cover.
- Parents' Assn Donation – these funds allow parents' on the association to make donations to the college that are for the benefit of all students, educational resources and environment facilities/ equipment etc.

Fees Protection Scheme:

- The Hutt Valley Presbyterian College for Girls Inc. operates a Fees Protection Scheme that parents can take advantage of. Under this optional scheme, claims made against the policy are paid at the current fee/donation rate to Hutt Valley Presbyterian College for Girls Inc. to manage, and guarantees the student's continued education at St. Oran's College up to and including Year 13.

ENROLMENTS:

On a student being offered a place in the school the following is requested:

- **Hutt Valley Presbyterian College for Girl's Inc "Capital Deposit" \$500.00**
 - This deposit is refundable on receipt of a written request at the time of the student leaving St. Oran's College. Requests that are not made within one term of the student leaving, will be treated as a donation to the college. A letter acknowledging this donation will be sent out for tax purposes.
- **St. Oran's College Board of Trustees Enrolment Donation* \$170.00**

PLEASE NOTE:

Please make payment to **Hutt Valley Presbyterian College for Girls' Inc (HVPC for Girls')** who will make payment to the Board of Trustees and the Parents' Association.

1. Extra curricular activities such as sports fees, music fees etc. are charged on term accounts on a "user pays" basis.
2. Fees maybe adjusted annually for funding requirements and/ or to reflect movements in the C.P.I.
3. The above fees relate to the 2012 year.



St. Oran's College Personnel - 2012

Senior Leadership Team

Principal	Mrs A D Ackroyd M.Tch.LN, B.Sc, Dip.EdMan, Dip.Tchg
Deputy Principal	Mrs A Seabrook B.A., Dip.Tchg
Assistant Principal	Ms P Cuttance M.Ed.L.,Dip.HSc,Post.Grad.Dip.Ed(Guid), Dip.Tchg
Executive Officer	Mrs C Wildon

Head of Learning Areas (Head of Faculties)

English	Ms C Ford B.A., Dip.Tchg.
Learning Languages	Ms J Brasier B.A., ESOL
Mathematics & Statistics	Mrs J Bodington B.A. H.D.E.
Social Sciences	Mrs M Connor Dip.Ed. Higher Cert. in Inclusive Education
Science	Mr K Deverall B.Sc (Hons) Dip Tchg
Health/Physical Education	Mrs N Parsons B. Ed, Dip Tchg.
The Arts	Mrs G Orsman Dip F.A. Dip Tchg
Chaplain/Christian Ed.	Mrs J Kearney N.Z.T.C.

Assistant Teachers

Ms K Ardin B.Ph.Ed.,B.Sci.,DipTchg.
Miss R Bunce B.A., Dip.Tchg.
Mrs J Butler B.A. (Hons) Dip.Tchg
Ms S Coales B.Ed., Phys.Ed (Hons)
Mrs D Culhane M.A. L.T.C.L.
Mrs R Day B.A., H.Dip.Ed., D.C.S.
Miss C French BA,Dip.Tchg.
Mrs S Gall B.Ed (Hons) Human Movement Studies
Ms A Graham B.A,Dip.Tch,Cert Fashion Design & Technology
Ms S Grieve B.Sc (Hons), Dip. Tchg.
Mrs C Harding M.A.,L.T.C.L.,Dip.Tchg.
Mrs J Howison B.SC, Dip.Tchg
Mr C Hosnell B.C.A., B.A., Dip.Tchg.
Ms A Kodama B.A.,Dip.Tchg.Dip.T.J.F.
Ms S Lamond B.A. (Hons),Dip.Tchg.
Mr R Lensen B.Sc (Hons), Dip Tchg.
Mrs M Macfarlane Home Eco. Tchg.Cert, Dip.Tchg.
Ms J Machin B.M.A., B.Des.(Hons),Dip.Tchg.
Ms A McDonald B.Com, B.Sc. Dip Tchg.
Mrs P Munn B.A., Dip Tchg.
Ms R Patston BSC, Dip Tchg.
Ms K Phillips B.Com., Dip.Tchg.
Ms T Phillips B.A., Dip.Tchg.
Mrs L Sanson B.Sc., Dip.Tchg.
Ms D Siegert D.A., Dip.Tchg, Dip T.E.S.L. (Lon)



Assistant Teachers:

(continued)

Mrs J Steedman B.Sc, PG Dip.Ed, Dip.Tchg.
Ms H Swale B.A., Dip.Tchg.
Ms A Swank B.A.,M.A.
Mr G Walsh B.Mus., Dip.Tchg.
Ms R Wright B.A.S., Dip.Tchg.

Non-Teaching Staff

College Counsellor	Mrs E de Joux B.A.,A.C.T.D.,Dip.Couns.
Head of Sports	Ms B Bialy
Cultural Co-ordinator	Mrs M Warring
College Secretary	Mrs I Mollins
Student/ Admin. Assistant	Mrs A Martin
Finance/ Office Assistant	Mrs I Mason
Uniform Shop Manager/Admin Assistant	Mrs L Singleton
Admin/Library Assistant/Careers	Mrs L Bell Dip.Car.Guid.
ICT Support	Mrs B Kowalczyk
Library Manager	Mrs C Boyd B.A.(Hons) Literature
Science Technician	Mrs J Bowen
Property Manager	Mr G Salisbury
Property Assistant	Mr L Inglis
Groundsman	Mr I Fyfe
Canteen Manager	Mrs S Kalyan
Canteen Assistant	Mrs N Keene
Staffroom Assistant	Ms K Sharp



The Board of Trustees

Chairperson:	Mr Tony Brennand
Deputy Chairperson:	Mrs Fiona Lennon
Treasurer:	Mr Paolo Ryan
Principal:	Mrs Dawn Ackroyd
Trustees:	Mrs Elizabeth Coe Mr Ross Wallace Mr Richard Harrison Mr Adrian Peoples Mrs Alice Hardie
Staff Representative:	Mrs Debs Siegert
Student Representative:	Miss Alexandra Miles
Secretary:	Mrs Cherie Wildon

Board of Proprietors

Mrs Elizabeth Coe (Chairperson)	Mr Ross Wallace (Deputy Chair)
Mr Richard Young (Treasurer)	Mr Richard Harrison
Rev Wayne Matheson	Mr Craig Marsters
Mrs Leigh Tennant	
Mrs Anna Kurth (Old Girls' Association Representative)	
Mr Paul Whitham (Parents' Association Representative)	
Mr Murray Ingram (Parents' Association Representative)	
Mrs Cherie Wildon (Secretary)	



Parents' Association

A very active Parents' Association supports St. Oran's College. Members organise family activities and social occasions for parents. Fund-raising is a significant part of the Association's function, and many school facilities have been provided from Parents' Association funds.

Mrs Christine Carline (President)

Mrs Wendy Watt (Vice President)

Mr Murray Ingram (Treasurer)

Mrs Fiona Donoghue (Secretary)

Mrs Carol Albrechtsen

Mrs Elizabeth Elder

Mrs Karen Ingram

Mrs Linda Jesson

Mrs Robyn Best

Mrs Wendy Duckworth

Mrs Dianne Thompson

Mrs Sarah Williams

Mrs Fiona Press

Mrs Kristin Harlen-Reese

Mrs Mandy Stewart

Mrs Vicki Steele

Mrs Lynley McInnarney

Mrs Robyn Pudney

Mrs Christine Knoef

NEW ZEALAND QUALIFICATIONS AUTHORITY

SECONDARY SCHOOL NCEA RESULTS 2011

TOP FOUR WELLINGTON GIRLS' SCHOOLS

NCEA LEVEL ONE – YEAR 11

	%
St. Oran's College	100
Chilton Saint James School	100
Samuel Marsden Collegiate	100
Queens Margaret College	100

NCEA LEVEL TWO – YEAR 12

St. Oran's College	98
Samuel Marsden Collegiate	97
Chilton Saint James School	95
Queen Margaret College	90

NCEA LEVEL THREE – YEAR 13

St. Oran's College	100
Chilton Saint James School	99
Samuel Marsden Collegiate	96
Queen Margaret College	91

UNIVERSITY ENTRANCE

St. Oran's College	100
Chilton Saint James School	99
Samuel Marsden Collegiate	98
Queen Margaret College	94

Special Character and the Determination of Preference

Special Character

St. Oran's College is a Year 7 to 13 college for girls, operating in the Hutt Valley. It became integrated into the State system under the Integration Act 1975 on 28th January 1991.

Founded under the auspices of the General Assembly of the Presbyterian Church of Aotearoa New Zealand with whom it has continuing association, the school is "interdenominational" providing an education with a special character based on the protestant teachings of the Presbyterian Church to girls primarily from the Hutt Valley.

Our school community through the general school programme and its religious instructions, observances and ceremonies exercises the right to live and teach the protestant interpretation of Christian values. These values are expressed in the Holy Scriptures and in the practices, worship and doctrine of the Presbyterian Church. The values are further emphasised by the expectation of full participation by all pupils in extra curricular activities both within and outside school hours.

Determination of Preference

A preference of enrolments under Section 29(1) of the Integration Act shall be given to those pupils with parent(s) or guardians who have established a particular connection with the school through membership of, or affiliation with the Presbyterian Church Aotearoa New Zealand, or a general connection with the Special Character of the school through acceptance of the statement of special character.

A student shall not be given preference for enrolment unless the Proprietor concurs that students' parent(s)/guardians have established a particular or general connection with the Special Character of the School to the satisfaction of the Board.

The Board of Proprietors in granting preference consider the following (in no particular order)

- Involvement with a parish/church (interdenominational). This is to be supported by a letter from a leader within the church,
- Siblings past and present at the School.
- Daughter of an old girl of the School.
- Association with the School.
- The length of time on the School's waiting list.

**ENROLMENT PROCESS FOR
ST. ORAN'S COLLEGE
Entry at Year 7**

STEPS

Fill out the application form and forward to the school office. This puts your daughter on the school's waiting list.
N.B. Currently applicants greatly exceed places available so should you be considering our college for your daughter, we encourage you to get the application form sent in as early as possible.

Two years prior to your daughter's year of enrolment you may request a tour of the college by contacting the school.

Mid-February, one year prior to your daughter's enrolment, you will be sent a letter asking you to confirm your daughter's enrolment by completing a datasheet and sending in relevant documentation.

In Term 2 of the year prior to your daughter's enrolment, you may be requested for an interview. Not all students will be interviewed. Applicants who have been enrolled for the greater length of time will be given preference for an interview.

During Term 2 interviews with students and parents are conducted.
This is followed by a tour of the college.

Preference Candidates

The Board of Trustees will determine priority status as per the college Enrolment Scheme (refer to enclosed documentation).

N.B.

- If the number of preference students exceeds the number of places then enrolment will be determined by date at which application was received.
- Students who are not offered a place will go onto a Preference Waiting List in date order of when application was received.

Non-Preference Candidates

Non-Preference Candidates will go onto a
Non-Preference Waiting List
in date order of
when application was received.

ST ORAN'S COLLEGE ENROLMENT SCHEME

The Ministry of Education has required the Board of Trustees to put in place an enrolment scheme for applications made for entry to the College. The Board is required to work within the **maximum roll under the Integration Agreement**.

The Integration Agreement states that “A preference of enrolment at the School...shall be given to those pupils with parents who have established a particular or general connection with the special character of the School...”

Each year, within 60 days of the closing date for applications, the Board of Proprietors will, identify all “preference applicants” whose parents/ guardians have applied to enrol them in the College in the following year.

The Board of Proprietors will pass this list of preference applicants to the Board of Trustees.

The first two priority groups set out below apply to **Preferential applicants only**.

First Priority: Priority to preference applicants for whom the school is “reasonably convenient”. The Education Amendment Act accepts that the definition of “reasonably convenient” for an Integrated School such as St Oran’s College, given that we serve the Special Character needs of the Wellington district, will be greater than for a State School. The area of ‘reasonably convenient’ is outlined on the map provided with this Enrolment Scheme, and can be described as follows:

The area of reasonable convenience encompasses students who live within the city limits of the Wellington, Lower Hutt, Upper Hutt and Porirua City Councils bounded by:

- Upper Hutt north to the top of the Rimutaka Hill.
- Porirua north to and including Pukerua Bay.

Should applications within this region exceed the number of places available, then the allocation of places will be made in the following order:

- a) Sisters of students who are currently attending the College.
- b) Sisters of students who have attended the college.
- c) The daughters of permanent staff who are employed by the College, or the daughters of Ministers who provide regular liturgy at the College Chapel services.
- d) Daughters of those who have or have had a role in a key school organisation/s over an unbroken period of at least three years.

e) Other Preferential Students:

In each of categories of (a) – (d) above, girls will be listed in order of receipt of their applications. St Oran’s College will use its “waiting list” which records the date at which application was received. In each of the categories, available places will be offered to girls in the order in which their names occur on the waiting list for a particular year of entry.

If at this point the number of preferential students remaining exceeds the number of places remaining then enrolment will be determined by date at which application was received.

Second Priority:

Preferential students whose place of residence is outside the area decreed reasonably convenient. If places remain for allocation to students in this priority group, selection will be by the same means as that specified for students with first priority status.

Third Priority:

If all preferential applicants for places can be enrolled, the college is able to enrol a limited number of non-preference students (up to 5% of the maximum number of students in any one year). Among non-preference students, priority will be selected by the same “stepped” enrolment process used for preference students.

Selection:

The selection process described for students in priority groups 1, 2, and 3 above will operate at each level, depending on the number of places deemed by the Principal to be available at each year level. In any year, however, very few places are likely to be available at Year 8 – 13.

Pre-enrolment:

Each year, applications for enrolment will be sought by a date which will be published in a daily or community newspaper circulating in the area served by the school. Applications for places will not be accepted after this date.

Informing Parents:

Within 90 days of the closing date for applications, parents will be informed of their daughter’s place on the waiting list. If places become available at a later date, places will be offered to girls in the order of their place on the waiting list.

The waiting list will remain operative only until March in the year of enrolment. (No waiting lists will be carried over to succeeding years)